

OPEN

THE UNIVERSAL SURFACE



NovaBell^DPRO
BUILD SURFACES

COLORSCALE

BEIGE

NOCE

BIANCO

GRIGIO

ANTRACITE

NERO

OPEN

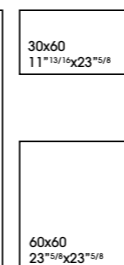
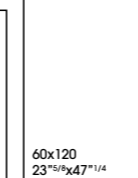
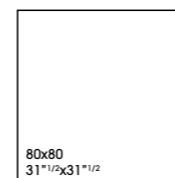
THE UNIVERSAL SURFACE

100% MADE IN ITALY

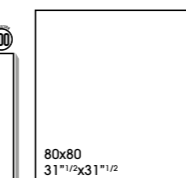
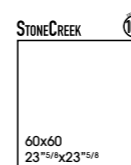
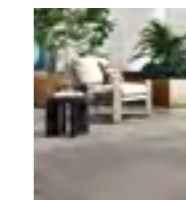
Open è un programma completo, caratterizzato da superfici essenziali ed equilibrate in grado di soddisfare tutte le esigenze del progetto architettonico
INDOOR & OUTDOOR



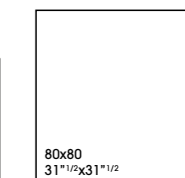
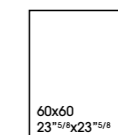
INDOOR



OUTDOOR



OUTDOOR



Open is a complete program, characterized by essential and balanced surfaces able to satisfy all the needs of the architectural project
INDOOR & OUTDOOR

Open est un programme complet, avec des surfaces minimalistes et équilibrées capables de satisfaire tous les besoins du projet architectural
INDOOR & OUTDOOR

Open ist ein kompletter program, der aus wesentliche und ausgewogene Oberflächen gekennzeichnet ist, so dass alle architektonische bedürfnisse in erfüllung gehen können
INDOOR & OUTDOOR

BEIGE

BEDROOM



WALL: Quercus Olmo 20x120 - 7⁷/₈x47¹/₄
FLOOR: Beige 80x80 - 31¹/₂x31¹/₂



WALL: Bianco 30x60 - 11^{13/16}x23^{5/8}
FLOOR: Grigio 80x80 - 31^{1/2}x31^{1/2}

4

BATHROOM BIANCO/GRIGIO

5



**IN &
OUT**

CONTINUITY EFFECT

PER SODDISFARE LA
CONTINUITÀ VISIVA FRA
INTERNO ED ESTERNO.

To ensure the visual
continuity between the
interior and exterior.

Pour satisfaire la continuité
visuelle entre intérieur et
extérieur.

Für die optisch einheitliche
Gestaltung von Innen- und
Außenbereich

FLOOR: Antracite 80x80 - 31 1/2x31 1/2

OUTDOOR living

ANTRACITE



FLOOR: Antracite 20MM 80x80 - 31¹/₂x31¹/₂

SPECIALI SUPERIFICI ANTISCIVOLO E ANTIGELO PER DARE PERSONALITA' A TERRAZZE, BALCONI E SPAZI ALL'APERTO

Special non-slip and frost-proof surfaces lend personality to terraces, balconies, and other outdoor spaces.

La finition spéciale est antidérapante et résistante au gel pour personnaliser les balcons et les terrasses.

Die besondere Oberfläche in rutschhemmender und frostbeständiger Ausführung ermöglicht ansprechende Gestaltungen von Terrassen, Balkonen und Außenbereichen.



FLOOR: Antracite 20MM 80x80 - 31" 1/2 x 31" 1/2





cm. 60x120
inch. 23⁵/₈x47¹/₄

cm. 80x80
inch. 31¹/₂x31¹/₂

cm. 60x60
inch. 23⁵/₈x23⁵/₈

cm. 30x60
inch. 11¹³/₁₆x23⁵/₈



cm. 60x120
inch. 23⁵/₈x47¹/₄

cm. 80x80
inch. 31¹/₂x31¹/₂

cm. 60x60
inch. 23⁵/₈x23⁵/₈

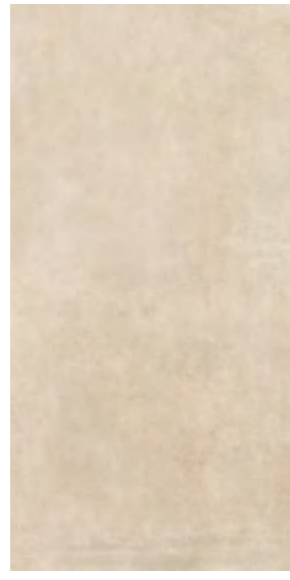


TECHNICAL		DIN EN 16165 annex B	DIN EN 16165 annex A	BCR	ANSI DCOF	Deep Abrasion Resistance	MOHS	Recommended Use	Resistance to Staining	ANSI A 137.1
N	NATURAL	R10	A+B	DRY > 0.40 WET > 0.40	WET ≥ 0.42	< 175 mm ³	≥ 5	4	5	V2
OUT WALK	20 MM	R11	A+B+C	DRY > 0.40 WET > 0.40	WET ≥ 0.42	< 130 mm ³	≥ 8	5	5	



80x80 - 31¹/₂x31¹/₂
OP 48RT Beige Rettificato

02
1075



60x120 - 23⁵/₈x47¹/₄
OP 42RT Beige Rettificato

02
1075



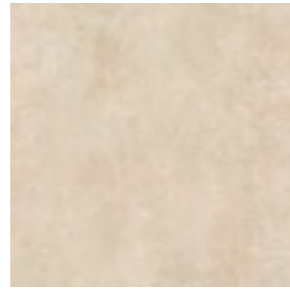
30x60 - 11¹³/₁₆x23⁵/₈
OP 46RT Beige Rettificato

07
1035



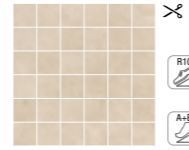
30x60 - 11¹³/₁₆x23⁵/₈
OP 446K Muretto Beige

04
3130



60x60 - 23⁵/₈x23⁵/₈
OP 40RT Beige Rettificato

03
1065



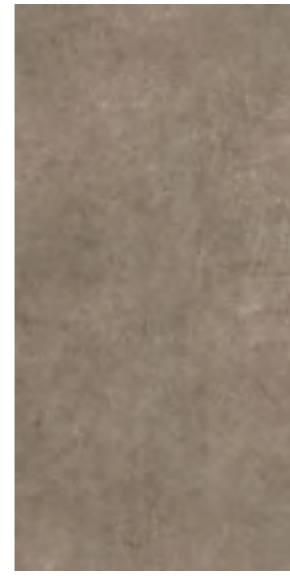
30x30 - 11¹³/₁₆x11¹³/₁₆
OP 445K Mos. 5x5
Beige

10
3115



7x60 - 2³/₄x23⁵/₈
OP B40K Battiscopa Beige

15
230



60x120 - 23⁵/₈x47¹/₄
OP 62RT Noce Rettificato

02
1075



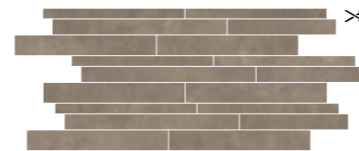
30x60 - 11¹³/₁₆x23⁵/₈
OP 66RT Noce Rettificato

07
1035



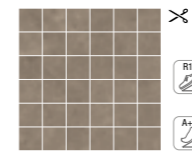
60x60 - 23⁵/₈x23⁵/₈
OP 60RT Noce Rettificato

03
1065



30x60 - 11¹³/₁₆x23⁵/₈
OP 666K Muretto Noce

04
3130



30x30 - 11¹³/₁₆x11¹³/₁₆
OP 665K Mos. 5x5
Noce

10
3115



7x60 - 2³/₄x23⁵/₈
OP B60K Battiscopa Noce

15
230

OUT WALK 20 MM

OPEN

80x80 - 31¹/₂x31¹/₂
OP 47RT Beige 20MM Rettificato

01
1120

60x120 - 23⁵/₈x47¹/₄
OP 49RT Beige 20MM Rettificato

01
1125

STONECREEK

COLLECTION 100

60x60 - 23⁵/₈x23⁵/₈
Y00460 Beige 20MM Rettificato

02
1110



80x80 - 31¹/₂x31¹/₂
OP 68RT Noce Rettificato

02
1075

STONECREEK

COLLECTION 100

60x60 - 23⁵/₈x23⁵/₈
Y00660 Noce 20MM Rettificato

02
1110



cm. 60x120
inch. 23⁵/₈x47¹/₄

cm. 80x80
inch. 31¹/₂x31¹/₂

cm. 60x60
inch. 23⁵/₈x23⁵/₈

cm. 30x60
inch. 11¹³/₁₆x23⁵/₈



cm. 60x120
inch. 23⁵/₈x47¹/₄

cm. 80x80
inch. 31¹/₂x31¹/₂

cm. 60x60
inch. 23⁵/₈x23⁵/₈

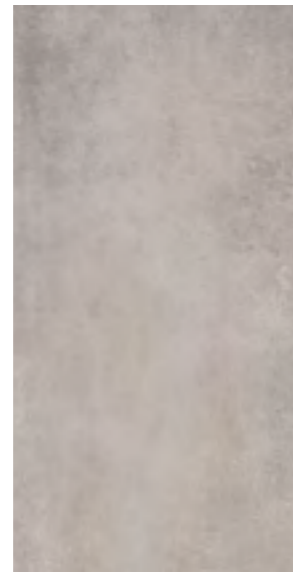


TECHNICAL		DIN EN 16165 annex B	DIN EN 16165 annex A	BCR	ANSI DCOF	Deep Abrasion Resistance	MOHS	Recommended Use	Resistance to Staining	ANSI A 137.1
N	NATURAL	R10	A+B	DRY > 0.40 WET > 0.40	WET ≥ 0.42	< 175 mm ³	≥ 5	4	5	V2
OUT WALK	20 MM	R11	A+B+C	DRY > 0.40 WET > 0.40	WET ≥ 0.42	< 130 mm ³	≥ 8	5	5	



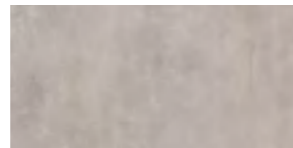
80x80 - 31¹/₂x31¹/₂
OP 18RT Grigio Rettificato

02
1075



60x120 - 23⁵/₈x47¹/₄
OP 12RT Grigio Rettificato

02
1075



30x60 - 11¹³/₁₆x23⁵/₈
OP 16RT Grigio Rettificato

07
1035



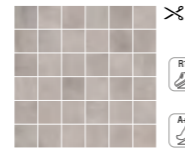
30x60 - 11¹³/₁₆x23⁵/₈
OP 116K Muretto Grigio

04
3130



60x60 - 23⁵/₈x23⁵/₈
OP 10RT Grigio Rettificato

03
1065



30x30 - 11¹³/₁₆x11¹³/₁₆
OP 115K Mos. 5x5
Grigio

10
3115



7x60 - 2³/₄x23⁵/₈
OP B10K Battiscopa Grigio

15
230



60x120 - 23⁵/₈x47¹/₄
OP 92RT Nero Rettificato

02
1075



30x60 - 11¹³/₁₆x23⁵/₈
OP 96RT Nero Rettificato

07
1035



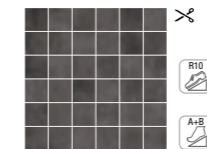
60x60 - 23⁵/₈x23⁵/₈
OP 90RT Nero Rettificato

03
1065



30x60 - 11¹³/₁₆x23⁵/₈
OP 996K Muretto Nero

04
3130



30x30 - 11¹³/₁₆x11¹³/₁₆
OP 995K Mos. 5x5
Nero

10
3115



7x60 - 2³/₄x23⁵/₈
OP B90K Battiscopa Nero

15
230



80x80 - 31¹/₂x31¹/₂
OP 98RT Nero Rettificato

02
1075



60x60 - 23⁵/₈x23⁵/₈
Y00960 Nero 20MM Rettificato

02
1110

OUT WALK 20 MM

OPEN

80x80 - 31¹/₂x31¹/₂
OP 17RT Grigio 20MM Rettificato

01
1120

60x120 - 23⁵/₈x47¹/₄
OP 19RT Grigio 20MM Rettificato

01
1125

STONECREEK

60x60 - 23⁵/₈x23⁵/₈
Y00160 Grigio 20MM Rettificato

02
1110

COLLECTION 100



cm. 60x120
inch. 23⁵/₈x47¹/₄ cm. 80x80
inch. 31¹/₂x31¹/₂ cm. 60x60
inch. 23⁵/₈x23⁵/₈ cm. 30x60
inch. 11¹³/₁₆x23⁵/₈



cm. 60x120
inch. 23⁵/₈x47¹/₄ cm. 80x80
inch. 31¹/₂x31¹/₂ cm. 60x60
inch. 23⁵/₈x23⁵/₈

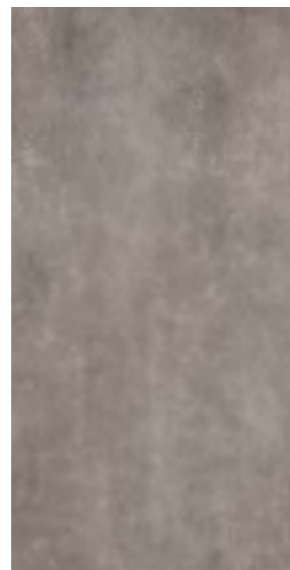


cm. 80x80
inch. 31¹/₂x31¹/₂ cm. 60x60
inch. 23⁵/₈x23⁵/₈



80x80 - 31¹/₂x31¹/₂
OP 28RT Antracite Rettificato

02
1075



60x120 - 23⁵/₈x47¹/₄
OP 22RT Antracite Rettificato

02
1075



30x60 - 11¹³/₁₆x23⁵/₈
OP 26RT Antracite Rettificato

07
1035



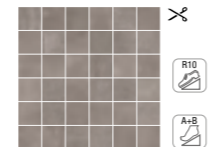
60x60 - 23⁵/₈x23⁵/₈
OP 20RT Antracite Rettificato

03
1065



30x60 - 11¹³/₁₆x23⁵/₈
OP 226K Muretto Antracite

04
3130



30x30 - 11¹³/₁₆x11¹³/₁₆
OP 225K Mos. 5x5
Antracite

10
3115



7x60 - 2³/₄x23⁵/₈
OP B20K Battiscopa Antracite

15
230

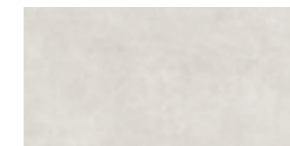


TECHNICAL	DIN EN 16165 annex B	DIN EN 16165 annex A	BCR	ANSI DCOF	Deep Abrasion Resistance	MOHS	Recommended Use	Resistance to Staining	ANSI A 137.1
N NATURAL	R10	A+B	DRY > 0.40 WET > 0.40	WET ≥ 0.42	< 175 mm ³	≥ 5	4	5	
OUT WALK 20 MM	R11	A+B+C	DRY > 0.40 WET > 0.40	WET ≥ 0.42	< 130 mm ³	≥ 8	5	5	V2
OUT WALK 30 MM	R11	A+B+C	DRY > 0.40 WET > 0.40	WET ≥ 0.42	< 130 mm ³	≥ 8	5	5	



60x120 - 23⁵/₈x47¹/₄
OP 82RT Bianco Rettificato

02
1075



30x60 - 11¹³/₁₆x23⁵/₈
OP 86RT Bianco Rettificato

07
1035



60x60 - 23⁵/₈x23⁵/₈
OP 80RT Bianco Rettificato

03
1065



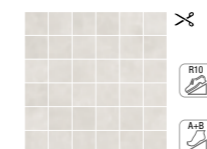
80x80 - 31¹/₂x31¹/₂
OP 88RT Bianco Rettificato

02
1075



30x60 - 11¹³/₁₆x23⁵/₈
OP 886K Muretto Bianco

04
3130



30x30 - 11¹³/₁₆x11¹³/₁₆
OP 885K Mos. 5x5
Bianco

10
3115



7x60 - 2³/₄x23⁵/₈
OP B80K Battiscopa Bianco

15
230

IMBALLI e PESI / Packaging and weights / Verpackungen und Gewichte / Emballages et poids

SCATOLA / BOX

PALLET

	pz	m2	kg	box	m2	kg	≡
80x80	2	1,280	26,4	40	51,200	1050	9
60x120	2	1,440	29,9	32	46,080	957	9
60x60	3	1,080	21,5	40	43,200	860	9
30x60	7	1,260	24,4	40	50,400	977	9
80x80	1	0,640	28,0	40	25,600	1120	20
60x120	1	0,720	31,5	32	23,040	1008	20
60x60 STONECREEK 100	2	0,720	31,4	32	23,040	1005	20
80x80	1	0,640	45,2	24	15,360	1085	30
60x60	2	0,720	49,3	22	15,840	1085	30

OUT WALK 20 MM

OPEN

80x80 - 31¹/₂x31¹/₂
OP 27RT Antracite 20MM Rettificato

01
1120

60x120 - 23⁵/₈x47¹/₄
OP 29RT Antracite Rettificato

01
1125

60x60 - 23⁵/₈x23⁵/₈
Y00260 Antracite 20MM Rettificato

02
1110

STONECREEK **COLLECTION 100**

OUT WALK 30 MM

80x80 - 31¹/₂x31¹/₂
OP 288R Antracite 30MM Rettificato

01
1150

60x60 - 23⁵/₈x23⁵/₈
OP 260R Antracite 30MM Rettificato

02
1130

NovaBell **PRO**
BUILD SURFACES

NOVABELL SpA CERAMICHE ITALIANE
via Molino, 1 - 42014 Roteglia (RE), Italia
T +39 0536 86 11 11 - F +39 0536 85 12 05
info@novabell.it - export@novabell.it
www.novabell.it

